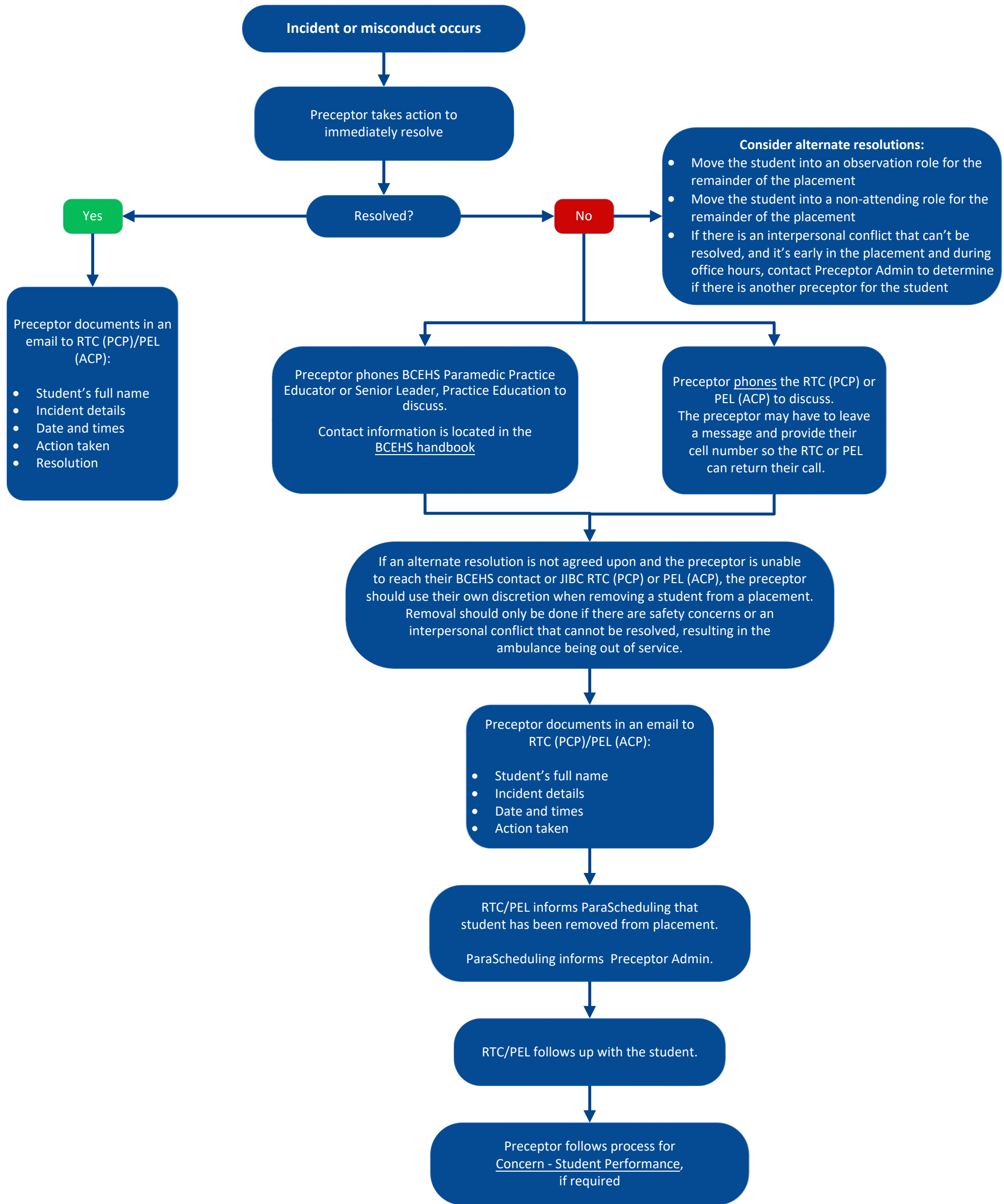


REMOVAL – AMBULANCE PLACEMENT

This process should be used by the preceptor to remove a student from an ambulance placement



The following resources can be provided to the student, if necessary:

- WorkSafe BC Critical Incident Response Program (WSCRIP) for personal counselling support 1-888-922-3700. Students must connect within 3 weeks of the CIS event to be eligible for 5 free counselling sessions.
- BC First Responders' Mental Health: <https://bcfirstrespondersmentalhealth.com/>
- Road to Mental Readiness (phone app): https://play.google.com/store/apps/details?id=ca.drdc.rddc.r2mr&hl=en_CA